

Olinda WTF 2yr Monthly Production

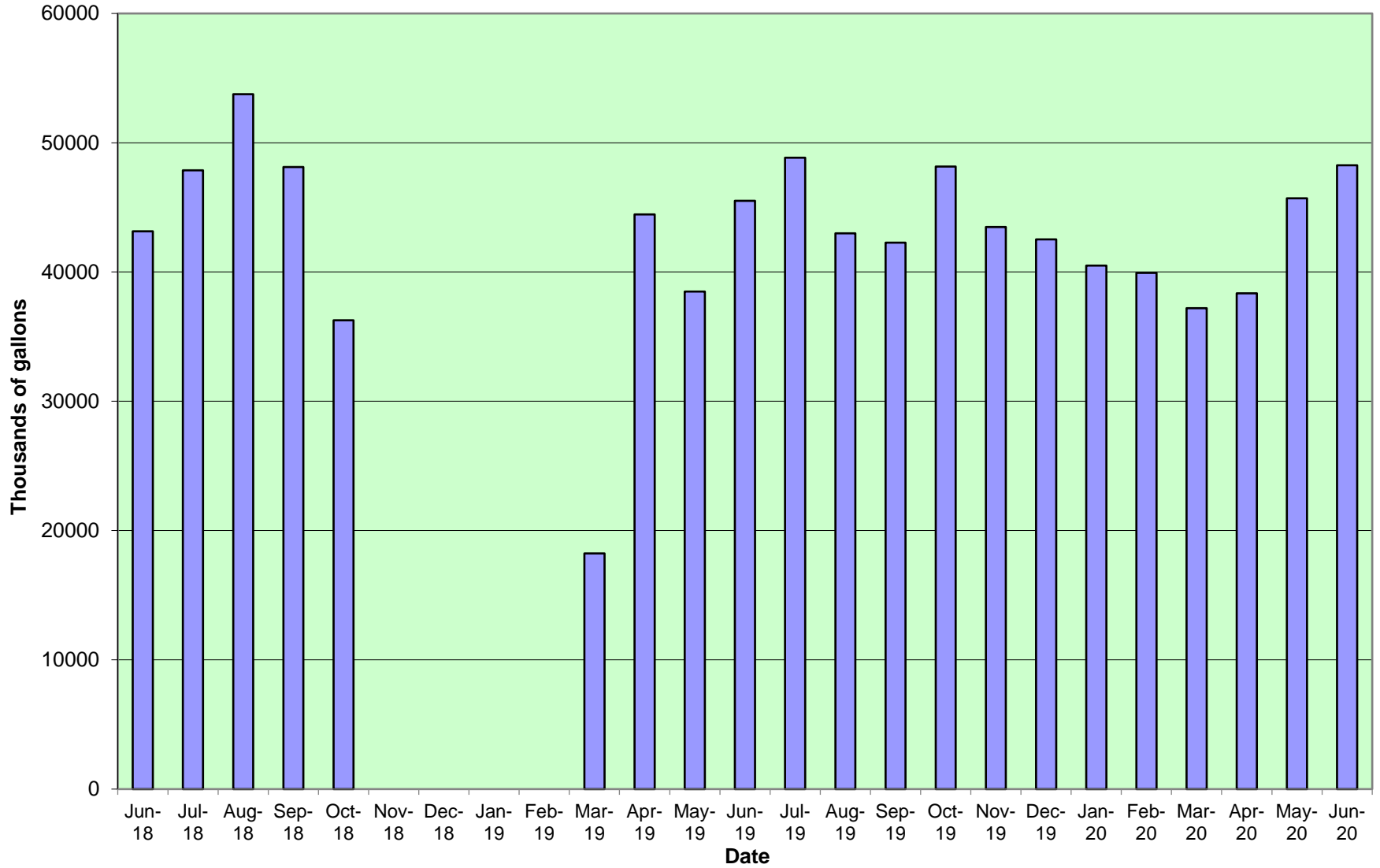


EXHIBIT M-8

Olinda Water Treatment Facility production

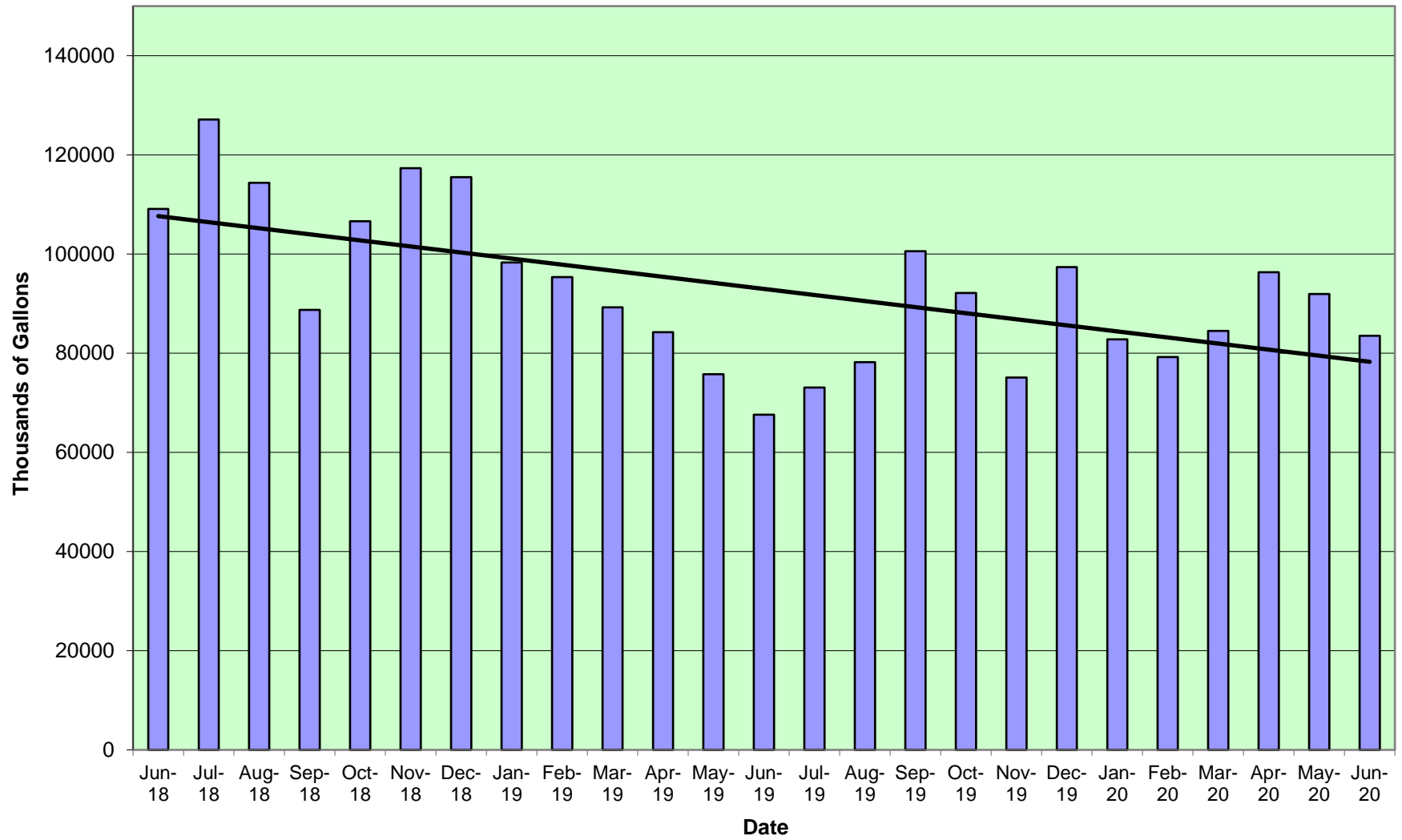
Date Water produced

Mar-09	38450
Apr-09	41560
May-09	42630
Jun-09	45850
Jul-09	48540
Aug-09	37150
Sep-09	41850
Oct-09	38540
Nov-09	17190
Dec-09	38310
Jan-10	46360
Feb-10	36260
Mar-10	38200
Apr-10	43040
May-10	53300
Jun-10	30580
Jul-10	5710
Aug-10	6300
Sep-10	6710
Oct-10	10170
Nov-10	46760
Dec-10	37990
Jan-11	12020
Feb-11	3610
Mar-11	29670
Apr-11	39170
May-11	4460
Jun-11	26190
Jul-11	54600
Aug-11	59150
Sep-11	5350
Oct-11	5760
Nov-11	4690
Dec-11	19600
Jan-12	51050
Feb-12	46790
Mar-12	43010
Apr-12	52950
May-12	61760
Jun-12	56740
Jul-12	54020
Aug-12	60050
Sep-12	45330
Oct-12	52990
Nov-12	16270
Dec-12	5810
Jan-13	6490
Feb-13	27050

Mar-13	46400
Apr-13	44660
May-13	42020
Jun-13	46250
Jul-13	49920
Aug-13	51330
Sep-13	11200
Oct-13	5270
Nov-13	4820
Dec-13	35190
Jan-14	33090
Feb-14	25970
Mar-14	29340
Apr-14	37610
May-14	33090
Jun-14	45500
Jul-14	45700
Aug-14	49420
Sep-14	33580
Oct-14	0
Nov-14	0
Dec-14	0
Jan-15	0
Feb-15	0
Mar-15	9080
Apr-15	44230
May-15	43780
Jun-15	42020
Jul-15	43920
Aug-15	40650
Sep-15	31920
Oct-15	35140
Nov-15	37210
Dec-15	38390
Jan-16	44410
Feb-16	44040
Mar-16	41920
Apr-16	40500
May-16	37380
Jun-16	38490
Jul-16	40920
Aug-16	42960
Sep-16	35160
Oct-16	48100
Nov-16	46770
Dec-16	35270
Jan-17	43020
Feb-17	36800
Mar-17	37440
Apr-17	39800
May-17	38880

Jun-17	40480
Jul-17	47620
Aug-17	51060
Sep-17	48860
Oct-17	40900
Nov-17	39010
Dec-17	37110
Jan-18	43130
Feb-18	30700
Mar-18	35500
Apr-18	31680
May-18	35650
Jun-18	43150
Jul-18	47870
Aug-18	53760
Sep-18	48120
Oct-18	36260
Nov-18	0
Dec-18	0
Jan-19	0
Feb-19	0
Mar-19	18220
Apr-19	44450
May-19	38480
Jun-19	45500
Jul-19	48840
Aug-19	43000
Sep-19	42270
Oct-19	48160
Nov-19	43480
Dec-19	42520
Jan-20	40500
Feb-20	39930
Mar-20	37200
Apr-20	38360
May-20	45710
Jun-20	48250
Jul-20	
Aug-20	
Sep-20	
Oct-20	
Nov-20	
Dec-20	

Pi`iholo WTF 2 yr Monthly Production



Pi'iholo Water Treatment Facility production

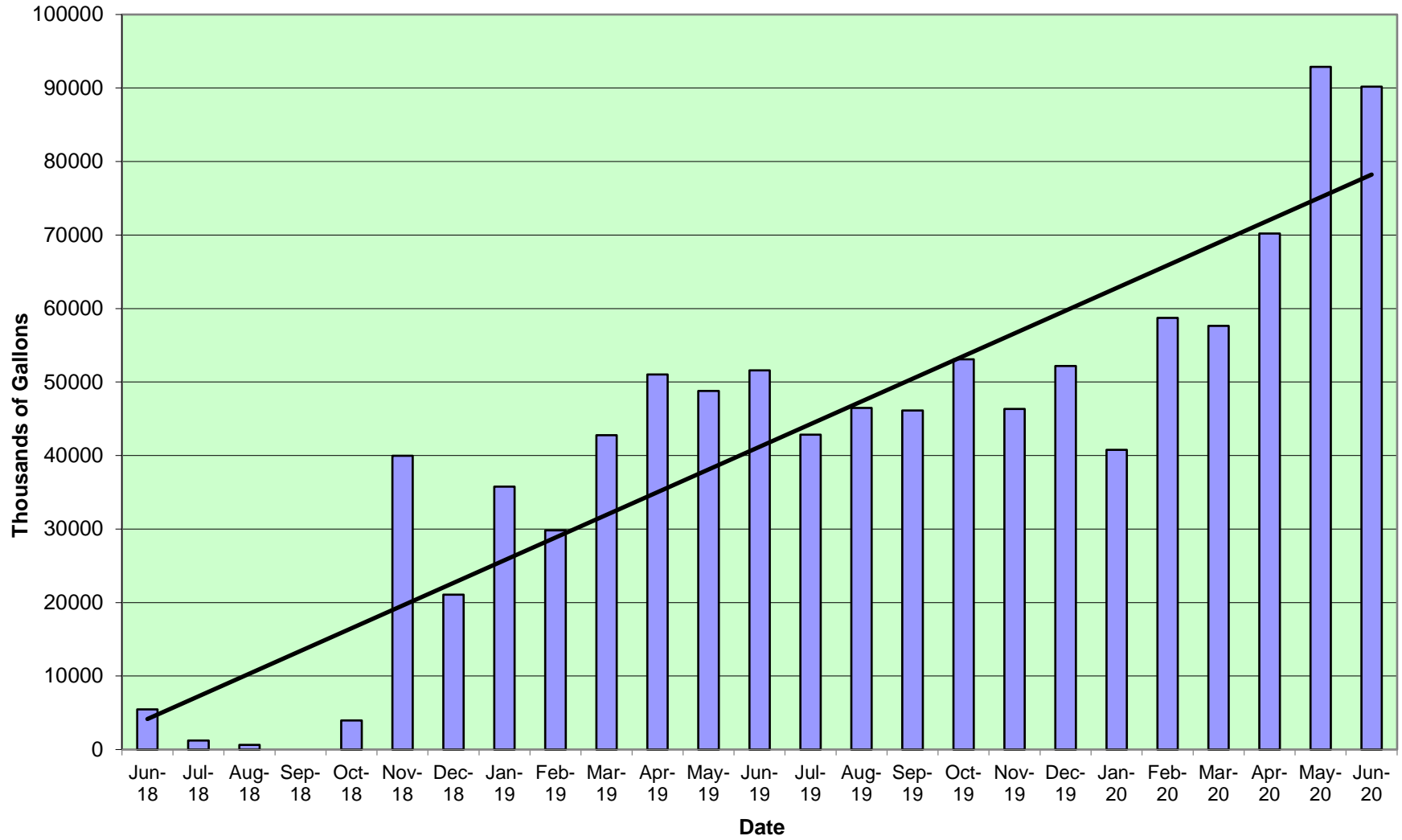
Date Water produced

Mar-09	108752
Apr-09	125003
May-09	77672
Jun-09	80121
Jul-09	109162
Aug-09	107041
Sep-09	94952
Oct-09	111302
Nov-09	108143
Dec-09	72462
Jan-10	71231
Feb-10	62240
Mar-10	84423
Apr-10	86983
May-10	93609
Jun-10	94439
Jul-10	117170
Aug-10	125313
Sep-10	115492
Oct-10	112732
Nov-10	87584
Dec-10	91877
Jan-11	84526
Feb-11	65823
Mar-11	87386
Apr-11	84424
May-11	110786
Jun-11	109710
Jul-11	100874
Aug-11	118855
Sep-11	119479
Oct-11	95047
Nov-11	104455
Dec-11	110167
Jan-12	83300
Feb-12	77170
Mar-12	115300
Apr-12	104658
May-12	110375
Jun-12	113760
Jul-12	116311
Aug-12	130917
Sep-12	111094
Oct-12	85643
Nov-12	105279
Dec-12	111499
Jan-13	107870
Feb-13	96280
Mar-13	92797

Apr-13	100275
May-13	95550
Jun-13	111095
Jul-13	86989
Aug-13	98415
Sep-13	99648
Oct-13	110384
Nov-13	81360
Dec-13	65506
Jan-14	83094
Feb-14	82589
Mar-14	89223
Apr-14	77974
May-14	77988
Jun-14	75334
Jul-14	101887
Aug-14	79204
Sep-14	77786
Oct-14	97000
Nov-14	98030
Dec-14	104858
Jan-15	95050
Feb-15	66963
Mar-15	85513
Apr-15	103837
May-15	119208
Jun-15	133045
Jul-15	132057
Aug-15	100297
Sep-15	101550
Oct-15	107674
Nov-15	110439
Dec-15	122246
Jan-16	83982
Feb-16	78685
Mar-16	90256
Apr-16	114344
May-16	109387
Jun-16	112552
Jul-16	126906
Aug-16	109268
Sep-16	103544
Oct-16	118663
Nov-16	101432
Dec-16	91425
Jan-17	83598
Feb-17	67533
Mar-17	78755
Apr-17	70383
May-17	115771
Jun-17	115018
Jul-17	102045

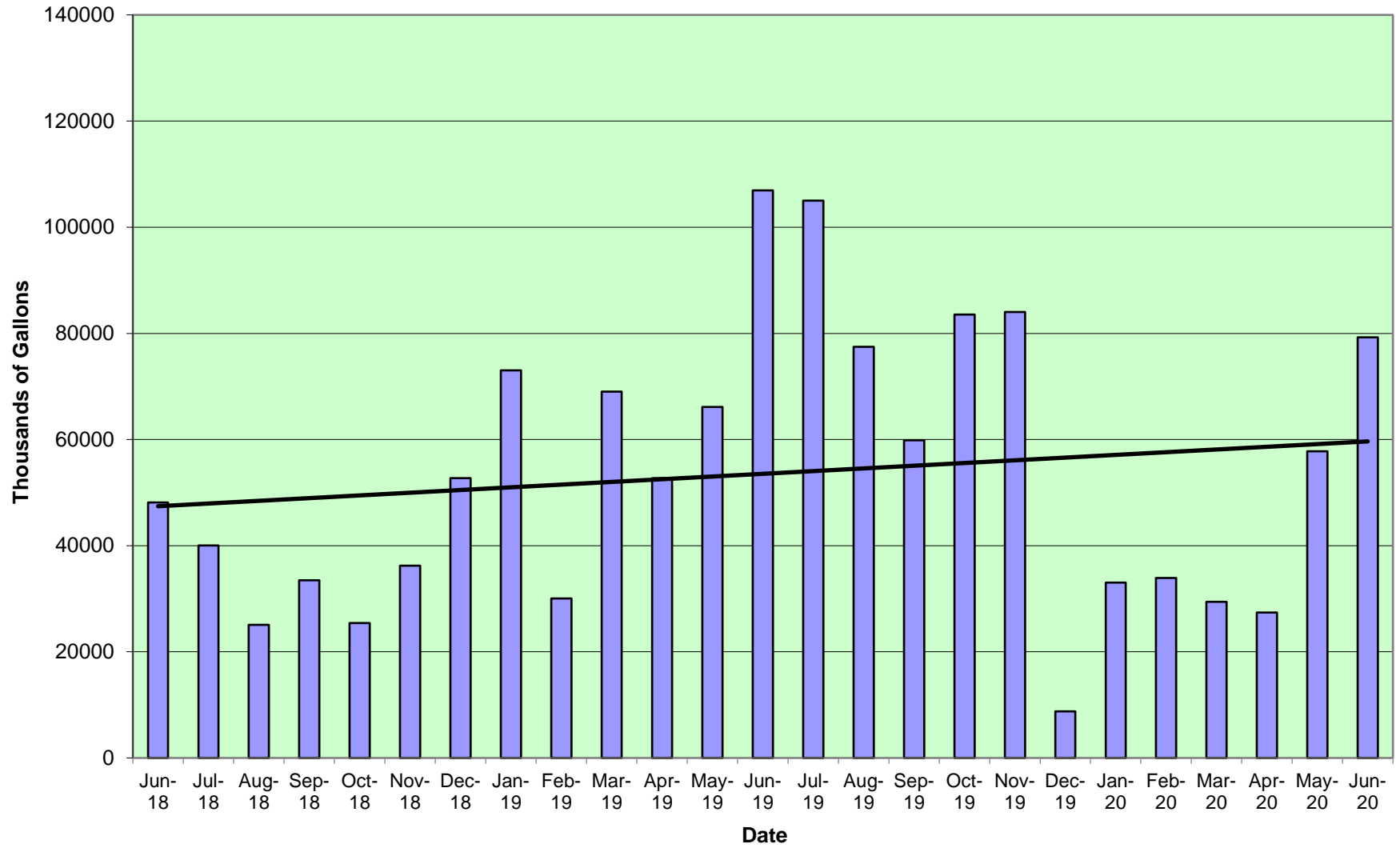
Aug-17	126277
Sep-17	75191
Oct-17	115095
Nov-17	105338
Dec-17	99456
Jan-18	83066
Feb-18	82440
Mar-18	103390
Apr-18	96034
May-18	99964
Jun-18	109119
Jul-18	127120
Aug-18	114375
Sep-18	88754
Oct-18	106644
Nov-18	117327
Dec-18	115518
Jan-19	98297
Feb-19	95351
Mar-19	89251
Apr-19	84217
May-19	75782
Jun-19	67590
Jul-19	73086
Aug-19	78189
Sep-19	100576
Oct-19	92139
Nov-19	75089
Dec-19	97382
Jan-20	82790
Feb-20	79246
Mar-20	84505
Apr-20	96354
May-20	91966
Jun-20	83510
Jul-20	
Aug-20	
Sep-20	
Oct-20	
Nov-20	
Dec-20	

Iao WTF 2 yr Monthly Production



Apr-15	18625
May-15	18235
Jun-15	36031
Jul-15	20255
Aug-15	31213
Sep-15	30197
Oct-15	16699
Nov-15	36267
Dec-15	43972
Jan-16	48613
Feb-16	31292
Mar-16	26448
Apr-16	13452
May-16	24606
Jun-16	11035
Jul-16	3440
Aug-16	15460
Sep-16	8950
Oct-16	0
Nov-16	1111
Dec-16	7543
Jan-17	16009
Feb-17	11164
Mar-17	15668
Apr-17	12841

Kamole WTF 2 yr Production



Kamole Water Treatment Facility production

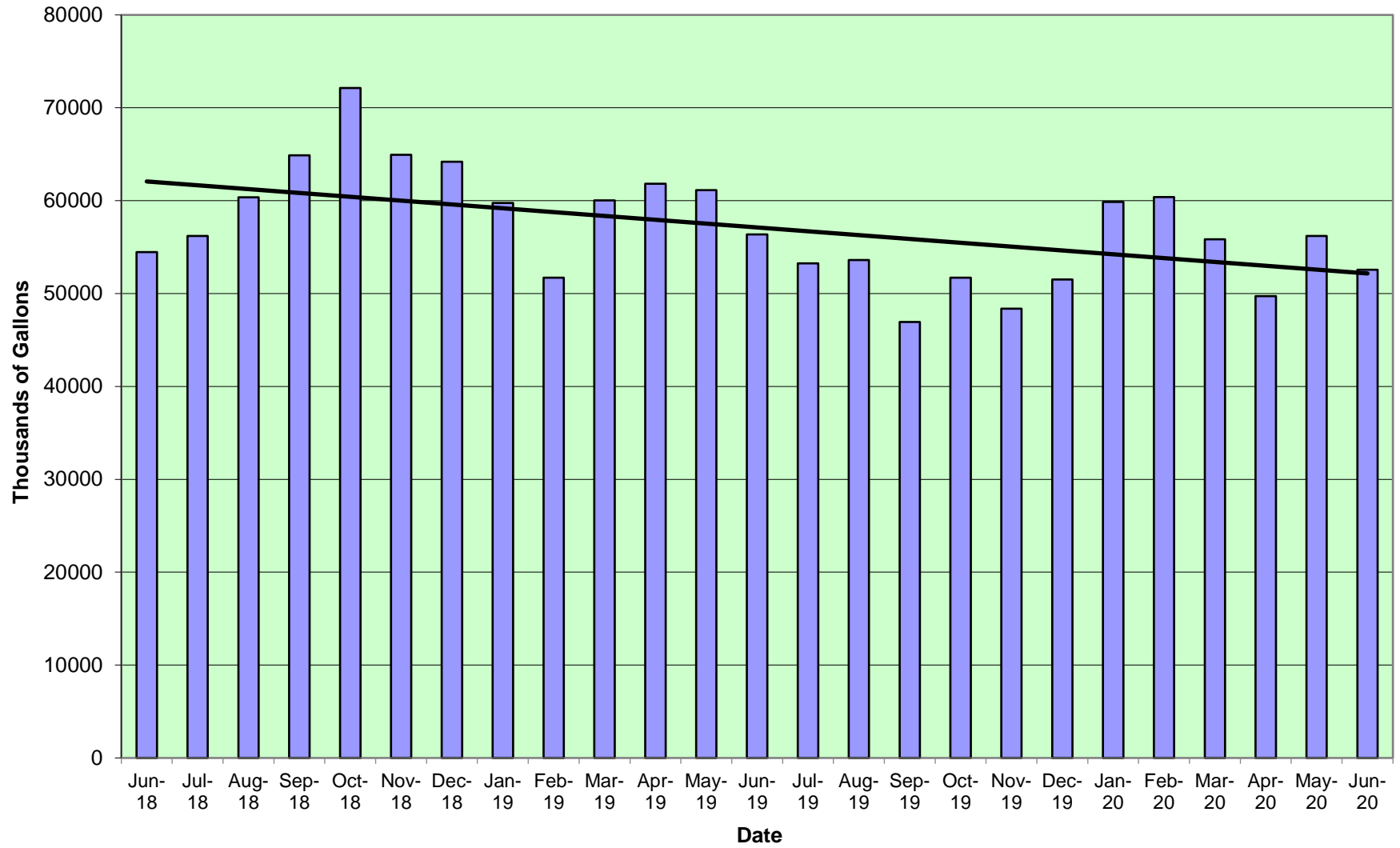
Date Water produced

Mar-09	1230
Apr-09	7542
May-09	78623
Jun-09	68790
Jul-09	53587
Aug-09	51703
Sep-09	83039
Oct-09	57902
Nov-09	50355
Dec-09	16621
Jan-10	69156
Feb-10	58331
Mar-10	43279
Apr-10	51917
May-10	71980
Jun-10	136024
Jul-10	144287
Aug-10	128072
Sep-10	156530
Oct-10	116210
Nov-10	59010
Dec-10	31900
Jan-11	57420
Feb-11	80630
Mar-11	36740
Apr-11	70810
May-11	70210
Jun-11	33345
Jul-11	68869
Aug-11	53620
Sep-11	104690
Oct-11	134470
Nov-11	58340
Dec-11	44260
Jan-12	83240
Feb-12	83710
Mar-12	19280
Apr-12	50740
May-12	60400
Jun-12	50880
Jul-12	60410
Aug-12	65410
Sep-12	61940
Oct-12	127740
Nov-12	118880
Dec-12	99140
Jan-13	80940
Feb-13	30550

Mar-13	9200
Apr-13	45560
May-13	50500
Jun-13	40850
Jul-13	72670
Aug-13	50440
Sep-13	109350
Oct-13	110380
Nov-13	72350
Dec-13	58000
Jan-14	14250
Feb-14	10870
Mar-14	11230
Apr-14	46920
May-14	63870
Jun-14	87500
Jul-14	62270
Aug-14	93640
Sep-14	101050
Oct-14	63510
Nov-14	60740
Dec-14	58350
Jan-15	66680
Feb-15	68760
Mar-15	61020
Apr-15	22050
May-15	14950
Jun-15	7630
Jul-15	26930
Aug-15	42730
Sep-15	7760
Oct-15	18350
Nov-15	20250
Dec-15	3940
Jan-16	57410
Feb-16	54660
Mar-16	50210
Apr-16	10580
May-16	21540
Jun-16	29250
Jul-16	11310
Aug-16	33090
Sep-16	20330
Oct-16	34130
Nov-16	64460
Dec-16	17240
Jan-17	52310
Feb-17	24080
Mar-17	1120
Apr-17	74520
May-17	15900

Jun-17	26140
Jul-17	60560
Aug-17	39540
Sep-17	109330
Oct-17	41520
Nov-17	24080
Dec-17	9480
Jan-18	59920
Feb-18	16960
Mar-18	10440
Apr-18	8400
May-18	21160
Jun-18	48140
Jul-18	40050
Aug-18	25080
Sep-18	33480
Oct-18	25420
Nov-18	36250
Dec-18	52720
Jan-19	73040
Feb-19	30040
Mar-19	69040
Apr-19	52730
May-19	66110
Jun-19	106920
Jul-19	105000
Aug-19	77480
Sep-19	59850
Oct-19	83530
Nov-19	84040
Dec-19	8770
Jan-20	33030
Feb-20	33930
Mar-20	29410
Apr-20	27400
May-20	57770
Jun-20	79230
Jul-20	
Aug-20	
Sep-20	
Oct-20	
Nov-20	
Dec-20	

Lahaina WTF 2 yr Production



Lahaina Water Treatment Facility production

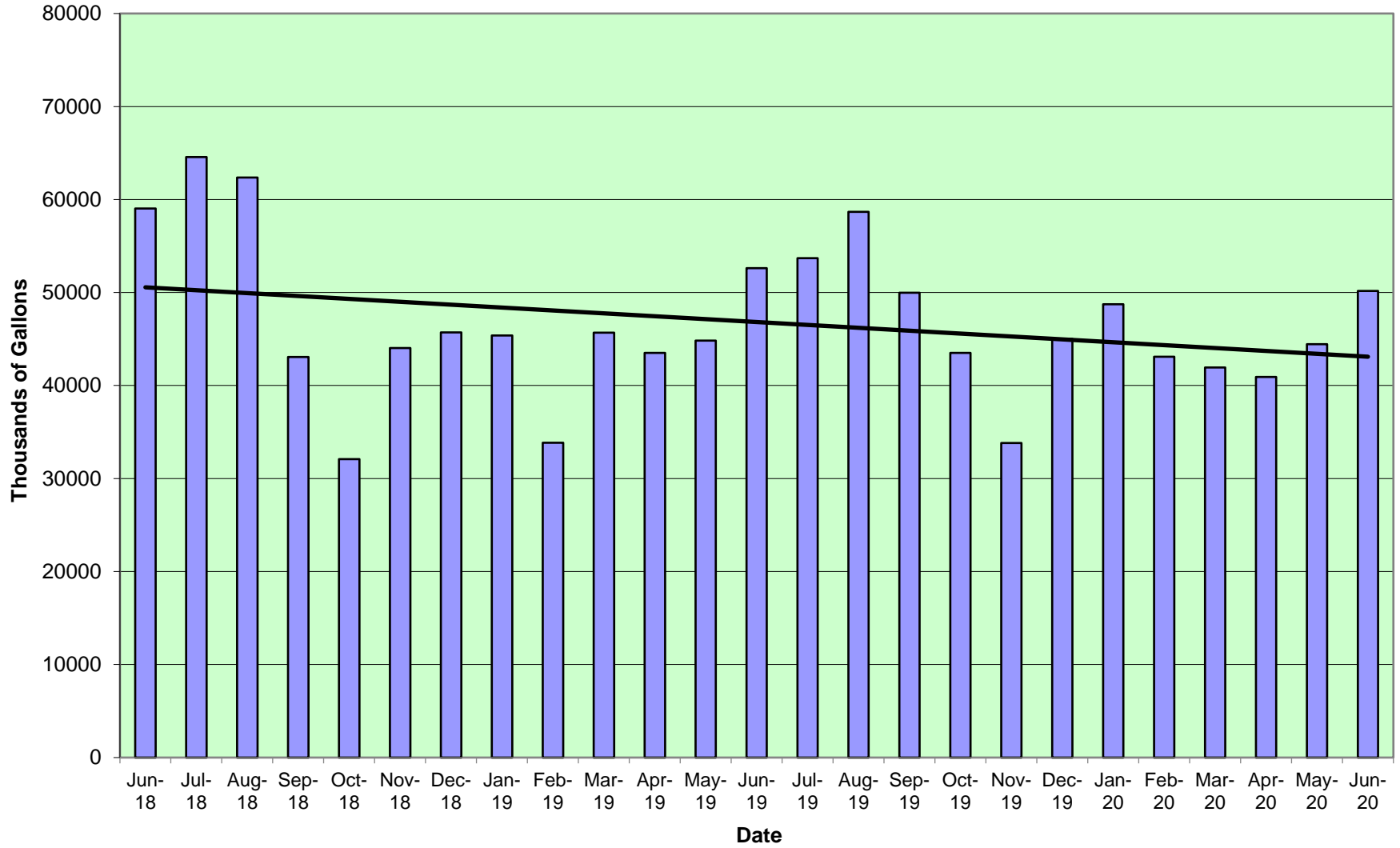
Date Water produced

Mar-09	44614
Apr-09	47375
May-09	48976
Jun-09	42772
Jul-09	47205
Aug-09	46670
Sep-09	44042
Oct-09	42085
Nov-09	46302
Dec-09	41472
Jan-10	37754
Feb-10	32120
Mar-10	39186
Apr-10	53486
May-10	47853
Jun-10	44943
Jul-10	47739
Aug-10	54992
Sep-10	39238
Oct-10	39318
Nov-10	44291
Dec-10	46765
Jan-11	45280
Feb-11	41180
Mar-11	56664
Apr-11	40673
May-11	39591
Jun-11	42324
Jul-11	47507
Aug-11	44886
Sep-11	37602
Oct-11	40784
Nov-11	44590
Dec-11	47422
Jan-12	48178
Feb-12	52666
Mar-12	55089
Apr-12	56500
May-12	55058
Jun-12	55552
Jul-12	55981
Aug-12	57459
Sep-12	50936
Oct-12	53176
Nov-12	49133
Dec-12	47521
Jan-13	41386
Feb-13	38776

Mar-13	46097
Apr-13	43553
May-13	45390
Jun-13	43457
Jul-13	45626
Aug-13	57826
Sep-13	51921
Oct-13	47484
Nov-13	50757
Dec-13	43392
Jan-14	44682
Feb-14	38415
Mar-14	46594
Apr-14	54752
May-14	61236
Jun-14	60146
Jul-14	63858
Aug-14	60782
Sep-14	54281
Oct-14	52426
Nov-14	51899
Dec-14	54289
Jan-15	48767
Feb-15	41603
Mar-15	45796
Apr-15	51168
May-15	58999
Jun-15	60068
Jul-15	59784
Aug-15	60920
Sep-15	56122
Oct-15	62670
Nov-15	64750
Dec-15	58255
Jan-16	53164
Feb-16	50783
Mar-16	55000
Apr-16	52189
May-16	54016
Jun-16	51609
Jul-16	55551
Aug-16	62766
Sep-16	50717
Oct-16	58730
Nov-16	54130
Dec-16	44334
Jan-17	51609
Feb-17	44679
Mar-17	50317
Apr-17	53801
May-17	48255

Jun-17	55224
Jul-17	61027
Aug-17	55607
Sep-17	49617
Oct-17	52323
Nov-17	50071
Dec-17	50236
Jan-18	54532
Feb-18	44340
Mar-18	55045
Apr-18	50709
May-18	57061
Jun-18	54459
Jul-18	56207
Aug-18	60369
Sep-18	64892
Oct-18	72137
Nov-18	64937
Dec-18	64182
Jan-19	59749
Feb-19	51701
Mar-19	60046
Apr-19	61814
May-19	61125
Jun-19	56357
Jul-19	53242
Aug-19	53612
Sep-19	46928
Oct-19	51718
Nov-19	48384
Dec-19	51527
Jan-20	59876
Feb-20	60401
Mar-20	55834
Apr-20	49730
May-20	56193
Jun-20	52571
Jul-20	
Aug-20	
Sep-20	
Oct-20	
Nov-20	
Dec-20	

Mahinahina WTF 2 yr Production



Mahinahina Water Treatment Facility production

Date	Water produced
Mar-09	39229
Apr-09	37142
May-09	44804
Jun-09	51406
Jul-09	54570
Aug-09	56540
Sep-09	49282
Oct-09	49026
Nov-09	45147
Dec-09	44650
Jan-10	40210
Feb-10	42780
Mar-10	46680
Apr-10	47670
May-10	42830
Jun-10	46820
Jul-10	52790
Aug-10	58520
Sep-10	47470
Oct-10	45950
Nov-10	41490
Dec-10	41580
Jan-11	37310
Feb-11	39890
Mar-11	39100
Apr-11	41420
May-11	59480
Jun-11	51620
Jul-11	52560
Aug-11	52420
Sep-11	48400
Oct-11	44710
Nov-11	44430
Dec-11	40510
Jan-12	53790
Feb-12	39600
Mar-12	38720
Apr-12	31940
May-12	41180
Jun-12	47980
Jul-12	45950
Aug-12	53610
Sep-12	50680
Oct-12	53070
Nov-12	58150
Dec-12	58850
Jan-13	55130
Feb-13	56340
Mar-13	51700

Apr-13	44310
May-13	57730
Jun-13	52870
Jul-13	52970
Aug-13	55320
Sep-13	52410
Oct-13	53180
Nov-13	51810
Dec-13	54970
Jan-14	46850
Feb-14	39530
Mar-14	44320
Apr-14	41170
May-14	45940
Jun-14	49290
Jul-14	57660
Aug-14	49980
Sep-14	49420
Oct-14	53120
Nov-14	45800
Dec-14	37620
Jan-15	39820
Feb-15	42310
Mar-15	43670
Apr-15	42800
May-15	46760
Jun-15	47320
Jul-15	53640
Aug-15	45820
Sep-15	33000
Oct-15	35680
Nov-15	36180
Dec-15	48140
Jan-16	61510
Feb-16	58000
Mar-16	53980
Apr-16	56550
May-16	60590
Jun-16	55820
Jul-16	59650
Aug-16	62040
Sep-16	55380
Oct-16	61980
Nov-16	62590
Dec-16	58510
Jan-17	55220
Feb-17	48290
Mar-17	54970
Apr-17	53980
May-17	58820
Jun-17	51650
Jul-17	55310

Aug-17	57120
Sep-17	53320
Oct-17	51300
Nov-17	44240
Dec-17	52520
Jan-18	55210
Feb-18	57050
Mar-18	64800
Apr-18	61200
May-18	62260
Jun-18	59020
Jul-18	64560
Aug-18	62370
Sep-18	43060
Oct-18	32100
Nov-18	44030
Dec-18	45700
Jan-19	45390
Feb-19	33850
Mar-19	45670
Apr-19	43510
May-19	44830
Jun-19	52610
Jul-19	53700
Aug-19	58680
Sep-19	49980
Oct-19	43510
Nov-19	33830
Dec-19	45030
Jan-20	48740
Feb-20	43090
Mar-20	41940
Apr-20	40910
May-20	44450
Jun-20	50160
Jul-20	
Aug-20	
Sep-20	
Oct-20	
Nov-20	
Dec-20	

Civ. No. 19-1-0019-01 (JPC)

Joint Exhibit _____

Plaintiff's Exhibit _____

Defendant's Exhibit M-8

FOR IDENTIFICATION _____

RECEIVED IN EVIDENCE _____

CLERK: _____